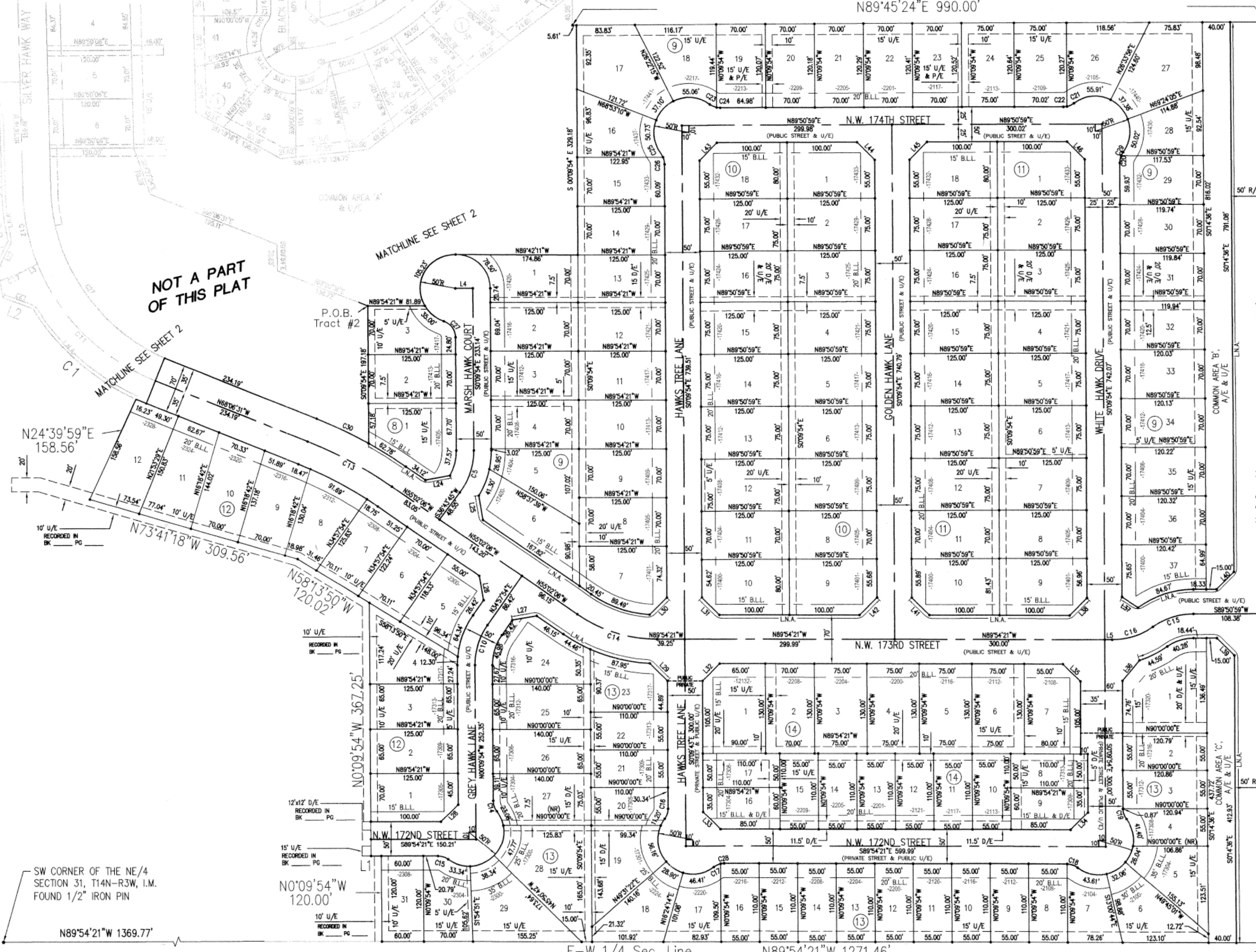


N89°45'24"E 990.00'

NOT A PART OF THIS PLAT



N24°39'59"E 158.56'

N73°41'18"W 309.56'

N58°13'50"W 120.02'

SW CORNER OF THE NE/4 SECTION 31, T14N-R3W, I.M. FOUND 1/2" IRON PIN

N0°09'54"W 120.00'

N89°54'21"W 1369.77'

E-W 1/4 Sec. Line

N89°54'21"W 1271.46'

SE CORNER OF THE NE/4 SECTION 31, T14N-R3W, I.M.